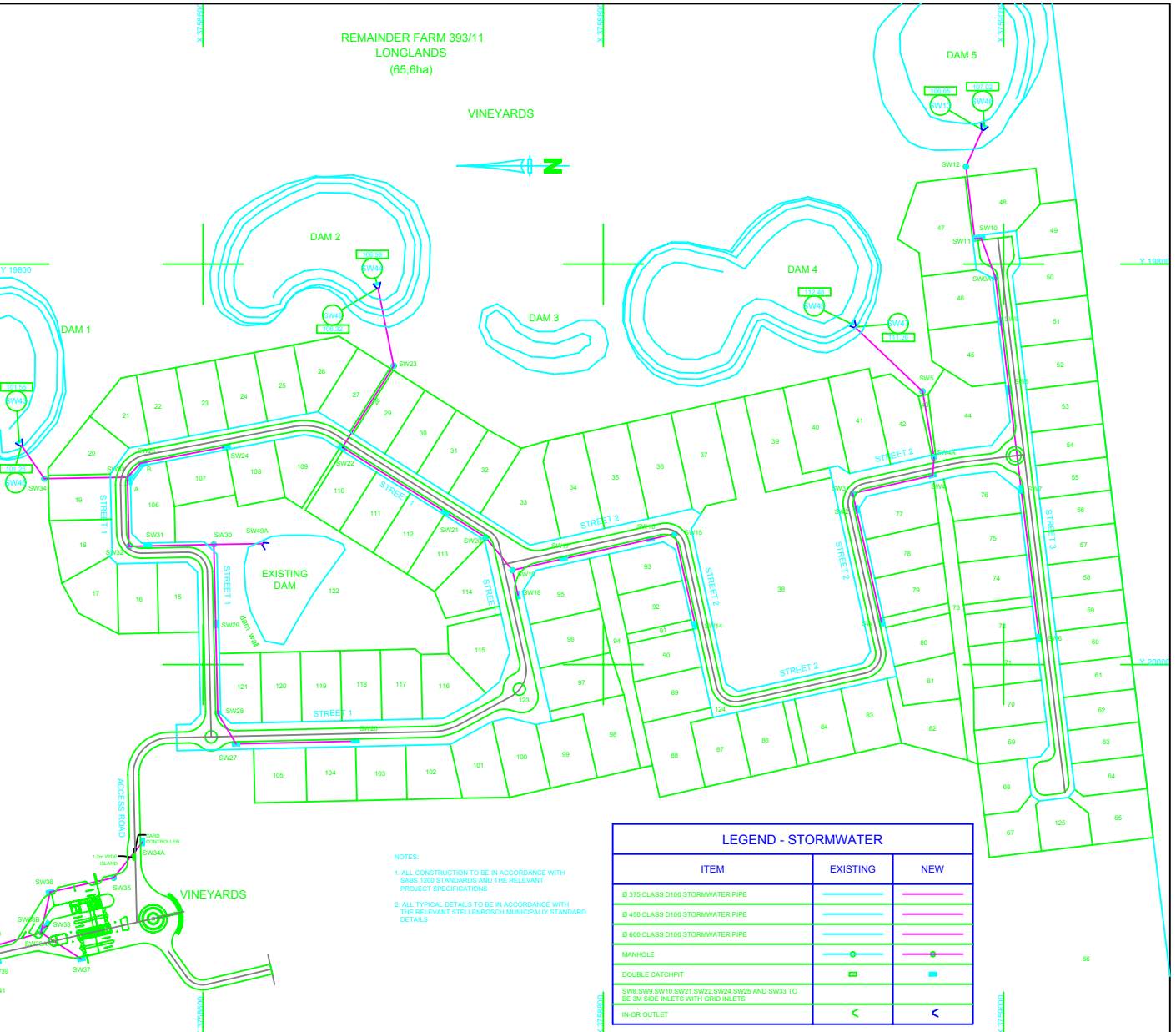
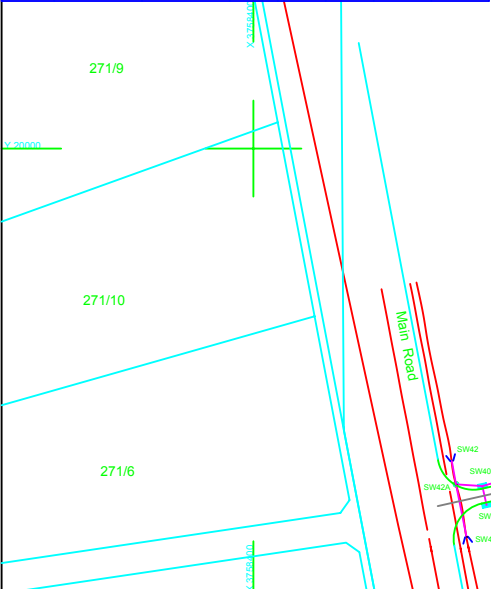


SETTING OUT DETAILS FOR STORMWATER						
MANHOLE No.	COORDINATE Y	COORDINATE X	COVER LEVEL	INVERT LEVEL	DEPTH	DISTANCE (m)
SW1	19810.878	376838.974	120.48	119.078	1.410	67.76
SW2	19820.256	376838.283	117.638	116.848	1.200	40.98
SW3	19814.521	376834.541	117.027	116.907	0.850	40.98
SW4	19826.226	376840.541	117.638	116.848	1.200	40.98
SW5	19826.558	376839.512	116.332	114.732	1.500	49.98
SW6	19818.226	376839.512	117.638	116.848	1.200	40.98
SW7	19817.426	376839.512	117.638	116.848	1.200	40.98
SW8	19824.621	376840.541	117.638	116.848	1.200	40.98
SW9	19824.621	376840.541	117.638	116.848	1.200	40.98
SW10	19826.726	376840.541	117.638	116.848	1.200	40.98
SW11	19817.426	376839.512	117.638	116.848	1.200	40.98
SW12	19817.426	376839.512	117.638	116.848	1.200	40.98
SW13	19814.521	376834.541	117.638	116.848	1.200	40.98
SW14	19820.256	376838.283	117.638	116.848	1.200	40.98
SW15	19824.621	376840.541	117.638	116.848	1.200	40.98
SW16	19826.558	376839.512	116.332	114.732	1.500	49.98
SW17	19827.426	376839.512	117.638	116.848	1.200	40.98
SW18	19826.558	376839.512	116.332	114.732	1.500	49.98
SW19	19826.558	376839.512	116.332	114.732	1.500	49.98
SW20	19826.558	376839.512	116.332	114.732	1.500	49.98
SW21	19826.558	376839.512	116.332	114.732	1.500	49.98
SW22	19826.558	376839.512	116.332	114.732	1.500	49.98
SW23	19826.558	376839.512	116.332	114.732	1.500	49.98
SW24	19826.558	376839.512	116.332	114.732	1.500	49.98
SW25	19826.558	376839.512	116.332	114.732	1.500	49.98
SW26	19826.558	376839.512	116.332	114.732	1.500	49.98
SW27	19826.558	376839.512	116.332	114.732	1.500	49.98
SW28	19826.558	376839.512	116.332	114.732	1.500	49.98
SW29	19826.558	376839.512	116.332	114.732	1.500	49.98
SW30	19826.558	376839.512	116.332	114.732	1.500	49.98
SW31	19826.558	376839.512	116.332	114.732	1.500	49.98
SW32	19826.558	376839.512	116.332	114.732	1.500	49.98
SW33	19826.558	376839.512	116.332	114.732	1.500	49.98
SW34	19826.558	376839.512	116.332	114.732	1.500	49.98
SW35	19826.558	376839.512	116.332	114.732	1.500	49.98
SW36	19826.558	376839.512	116.332	114.732	1.500	49.98
SW37	19826.558	376839.512	116.332	114.732	1.500	49.98
SW38	19826.558	376839.512	116.332	114.732	1.500	49.98
SW39	19826.558	376839.512	116.332	114.732	1.500	49.98
SW40	19826.558	376839.512	116.332	114.732	1.500	49.98
SW41	19826.558	376839.512	116.332	114.732	1.500	49.98
SW42	19826.558	376839.512	116.332	114.732	1.500	49.98
SW43	19826.558	376839.512	116.332	114.732	1.500	49.98
SW44	19826.558	376839.512	116.332	114.732	1.500	49.98
SW45	19826.558	376839.512	116.332	114.732	1.500	49.98
SW46	19826.558	376839.512	116.332	114.732	1.500	49.98
SW47	19826.558	376839.512	116.332	114.732	1.500	49.98
SW48	19826.558	376839.512	116.332	114.732	1.500	49.98
SW49	19826.558	376839.512	116.332	114.732	1.500	49.98
SW50	19826.558	376839.512	116.332	114.732	1.500	49.98
SW51	19826.558	376839.512	116.332	114.732	1.500	49.98
SW52	19826.558	376839.512	116.332	114.732	1.500	49.98
SW53	19826.558	376839.512	116.332	114.732	1.500	49.98
SW54	19826.558	376839.512	116.332	114.732	1.500	49.98
SW55	19826.558	376839.512	116.332	114.732	1.500	49.98
SW56	19826.558	376839.512	116.332	114.732	1.500	49.98
SW57	19826.558	376839.512	116.332	114.732	1.500	49.98
SW58	19826.558	376839.512	116.332	114.732	1.500	49.98
SW59	19826.558	376839.512	116.332	114.732	1.500	49.98
SW60	19826.558	376839.512	116.332	114.732	1.500	49.98



LEGEND - STORMWATER		
ITEM	EXISTING	NEW
Ø 375 CLASS D100 STORMWATER PIPE		
Ø 450 CLASS D100 STORMWATER PIPE		
Ø 600 CLASS D100 STORMWATER PIPE		
MANHOLE		
DOUBLE CATCHPIT		
SW6, SW9, SW10, SW21, SW22, SW24, SW25, SW26 AND SW33 TO BE 3M SIDE INLETS WITH GRID INLETS		
IN-OR OUTLET		

NOTES:  
 1. ALL CONSTRUCTION TO BE IN ACCORDANCE WITH SANS 1028 STANDARDS AND THE RELEVANT PROJECT SPECIFICATIONS  
 2. ALL TYPICAL DETAILS TO BE IN ACCORDANCE WITH THE RELEVANT STELLENBOSCH MUNICIPAL STANDARD DETAILS

Amendment No.   Date   Checked   Done 1.   10/09/09   F.O.   STORMWATER LAYOUT AMENDED 2.   03/11/09   P.D.   STORMWATER LAYOUT AMENDED 3.   03/11/09   EDW.   STORMWATER LAYOUT AMENDED AND STORMWATER AMENDED 4.   14/11/09   EDW.   STORMWATER BUILT				SCALE FOR REDUCED PLAN  Notes	Designed: A.A. Drawn: EDW. Checked:	Client: LONGLANDS HOLDINGS (Pty) Ltd Project: CIVIL ENGINEERING SERVICES FOR LONGLANDS COUNTRY ESTATE Drawing description: STORMWATER LAYOUT	Date: 1:1000 Date: MAY 2009 Drawing number: 20815BKS/05
--	--	--	--	-------------------------------------	---	--	---