

# Longlands

## Window to Stellenbosch Winelands

### Architectural Design Guidelines

#### 7.0 SPECIFICATION AND TYPICAL DETAILS

It is not the intent of this document to prescribe to the architectural professional the detailed design and specification. It is merely a guideline and an interactive process to assist with good detailing and construction methods. It is the responsibility of the architectural professional to ensure that details are correctly designed and correctly adapted on site. Lessor detailing will not be permitted and will lead to a “non-compliance” on site if a lesser detail is applied on site.

#### 7.1 ROOF SPECIFICATION

Bronwbuild Kliplok 700 or Safrinta Saflok 700

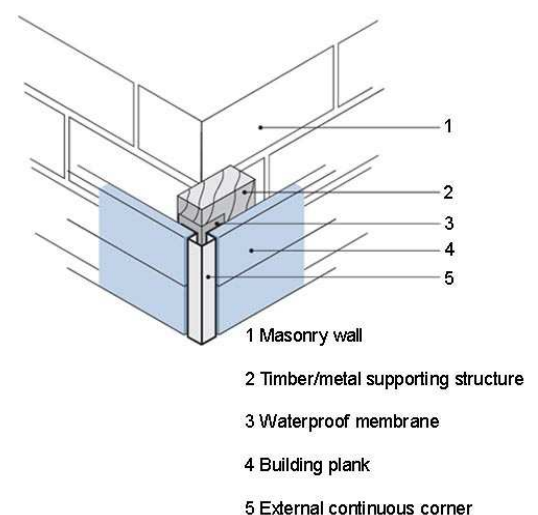
Safintra 0,47mm thick 700mm cover SAFLOK 700 Zinc-Aluminium AZ150 G550 interlocking roof covering fixed to timber purlins at 900mm centres and ridge purlins at 765mm centres using galvanised SL 700 clips secured to purlins with 3No. 12 x 45mm Class 3 wafer head self tapping screws, all in accordance with manufacturer's specifications.



Colour Illustration – due to printing difference this colour must be checked with the supplier – Charcoal by Safrinta or Browbuild

#### 7.2 VERMONT “ADVANTAGE” NUTEC BOARD CLADDING

Everite Nutec Vermont Advantage 204 x 7,5mm thick external building plans with a minimum 25mm overlap, fixed to vertical timber framing at 600mm centres, using concealed 3 x 40mm galvanised nails with open joints with flexible polysulphide sealant and 250µm SABS approved waterproofing membrane fixed between the weather boarding and vertical studs. Internal corners finished with preformed aluminium continuous corner joiner and external corners finished with preformed aluminium continuous corner joiner including 200mm girth vertical flashings with timber tilting battens and 20mm thick door and window reveals (Code : 788-300), all in accordance with the manufacturer's recommendations.





**7.4 STEEL WALL CLADDING**

Safintra 462mm girth Zinc-Aluminium AZ150 G550 external corner flashing, all fixed in accordance with the manufacturer's recommendations. Mill finish only.

