

## Schematic illustrations by

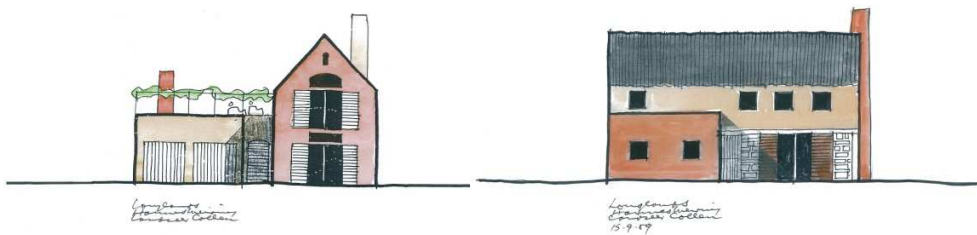
### HANNES MEIRING

*Architect, painter and graphic artist*



### “ In My Words”

*Extracts form an interview with Karen Eicker (Architecture Review, June 2006), Hannes Meiring generously contributed a biographical text with references to his personal and professional philosophies.*



#### **My philosophy on life**

I am attracted to small things: pondokkies, cottages on the wayside, the brave attempts of people to adorn their houses as seen on the platteland and in the remote countryside. I visualise the dreams and aspirations of how often poor people portray this in their lifestyle. I like people and am always fascinated by the individual's response to the environment.

#### **My philosophy on architecture**

I believe in the human scale. Whether the buildings are large and grand, or small, I want to see the proportions balanced. I like symmetry. I want people to react to buildings: on entering, on observing, on feeling an atmosphere. Being a romantic, I have an appreciation for magnificent buildings, but I do absolutely appreciate modern architecture, and abhor trends to overdo and corrupt styles. Well, we know about the Tuscany-deluge, and I do find the twee approach that post modernism has brought about quite hideous. We have such wonderful coastal villages, but so many of them are really disgraced by huge houses.

I like the use of glass very much. Ever changing reflections tend to give a wonderful life to buildings. And the use of colour in buildings always interests me. It is really the "harmonious discord" ethic that I enjoy most. To turn to Van der Rohe and le Corbusier as opposites.

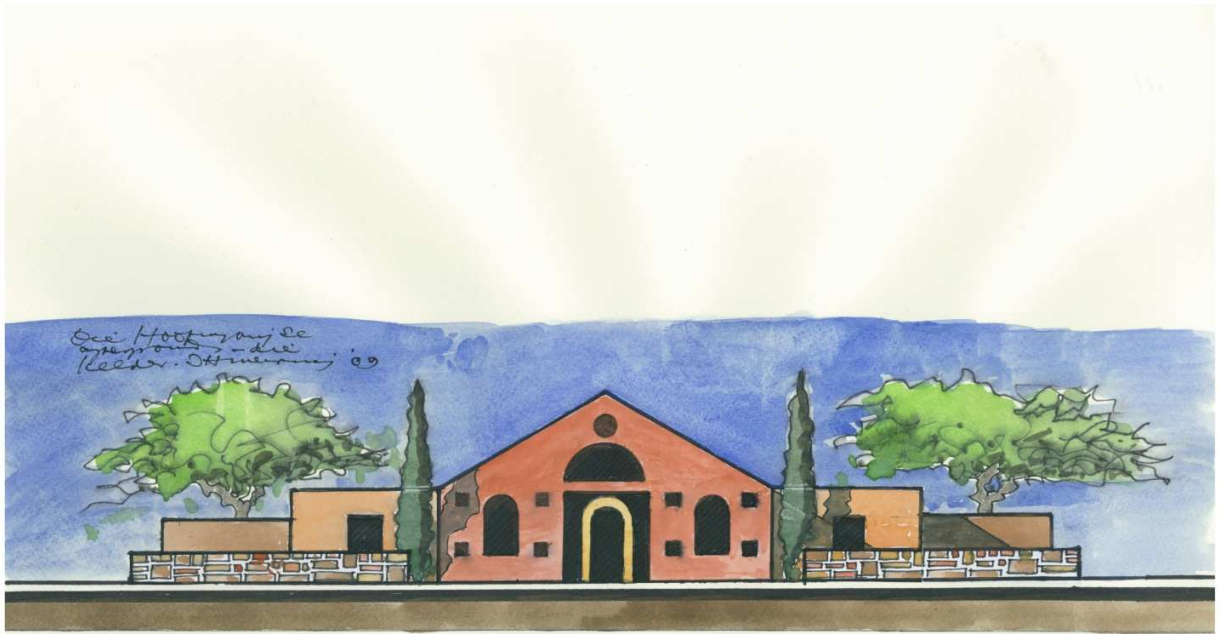
And I would always advise architects to suggest to their clients the incorporation of artwork, especially sculpture.

#### **What my drawings mean to me:**

My drawings are probably a relief from the frustration of getting a building built! Houses, buildings have personalities and character and that is what inspires me to draw.

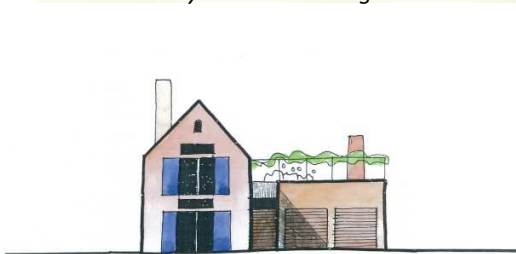
After the frustration of actually getting a building built, the rules and regulations (which I simply abhor), the slow calamity involved with passing all the municipal regulations, and finally seeing a structure standing there...../

The “Cellar Wall” is a design of Hannes Meiring and is a testament to a living art, unique to the exclusive lifestyle of Longlands Country Estate. Refer to “Cellar Wall,” illustration by Hannes Meiring.



## the cellar wall

Illustration by Hannes Meiring



Longlands -  
Hannes Meiring  
15.9.09



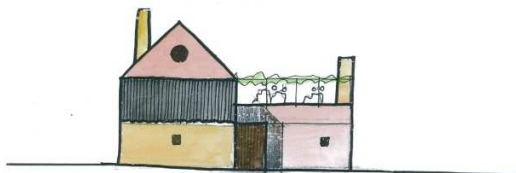
Longlands -  
Hannes Meiring  
15.9.09



Longlands -  
Hannes Meiring  
15.9.09



Longlands -  
Hannes Meiring  
15.9.09



Longlands -  
Hannes Meiring  
15.9.09



Longlands -  
Hannes Meiring  
15.9.09

In memory of a great architectural spirit – 3<sup>rd</sup> May 2010